

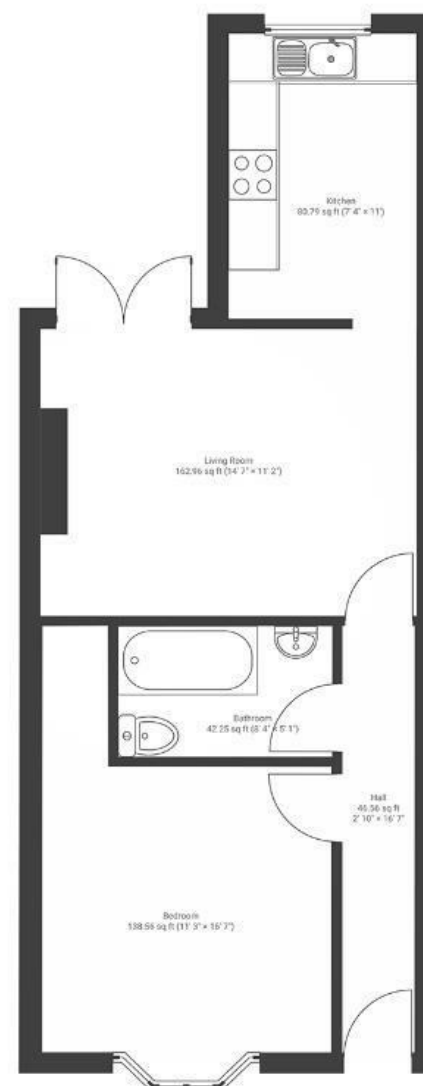
# Bathwell Road

## TOTTERDOWN

APPROXIMATE FLOOR AREA  
49 SQM / 527 SQFT



### BASEMENT FLAT



Boardwalk

# Bathwell Road

TOTTERDOWN, BRISTOL

£

£250,000

zzz

1 Bedrooms



BS4 3AN



1 Bathrooms

*"This has been a wonderful first home for us. The view across the city from the garden is amazing and quite a rare thing to find in a garden flat. We love living in Totterdown because of the lovely community here, the abundance of green spaces, and the great places to eat and drink. Perrett Park is a five-minute walk away and our favourite place to watch the sunset or the Balloon Fiesta. Renovating the flat has been a joy, and we hope the next owners enjoy living here as much as we have."*

